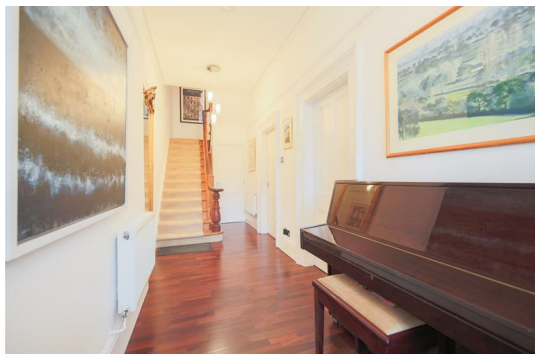




2A Cavendish Villas | Buxton





2A Cavendish Villas | Buxton

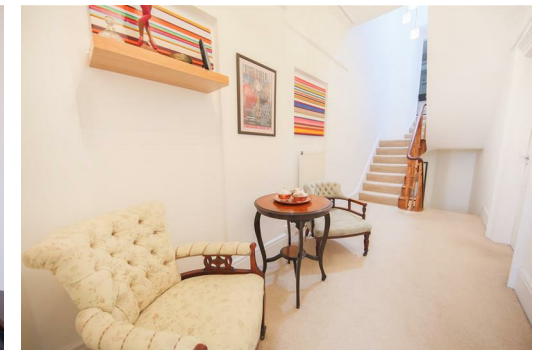


- Accommodation
Spread Over Three
Floors
- Grade II Listed
- Idyllic Location
 - Overlooks
Pavillion Gardens



Cavendish Villas is an exceptional piece of history, offered with no onward chain and built in 1861 by William Cavendish, the 7th Duke of Devonshire, the grade II listed property overlooks the Pavilion Gardens, situated on The Broad Walk in the heart of Buxton.

The accommodation in brief comprises of; entrance porch, generous hallway, bay fronted living room with views overlooking Pavillion Gardens, fitted dining kitchen with access to the rear yard and w.c.

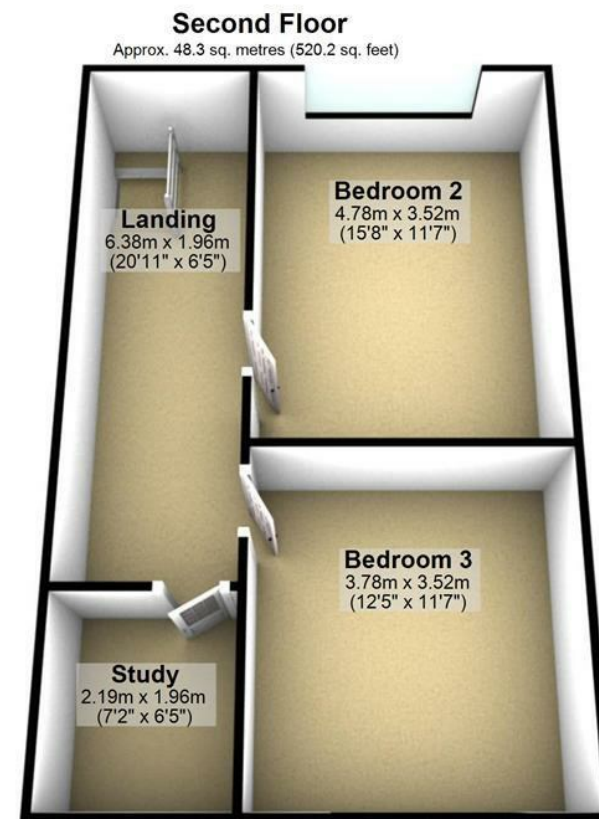
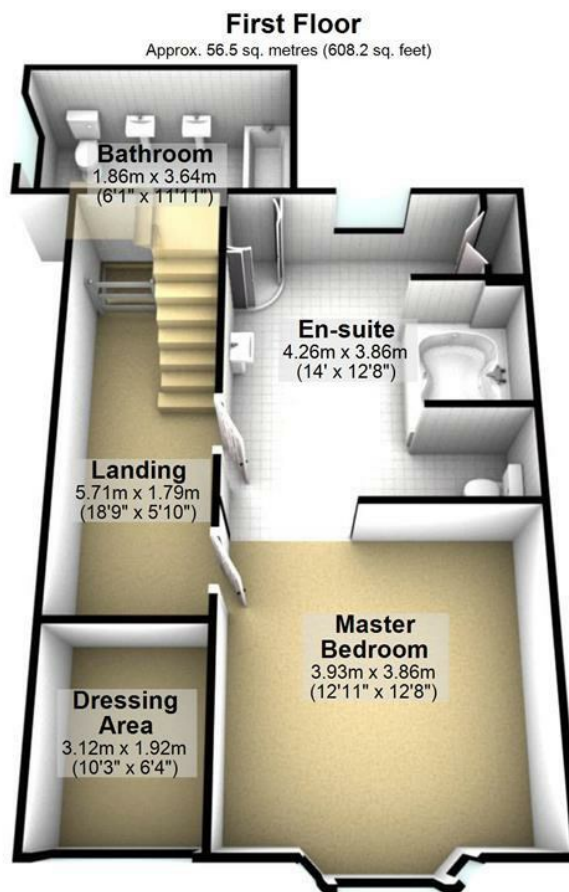
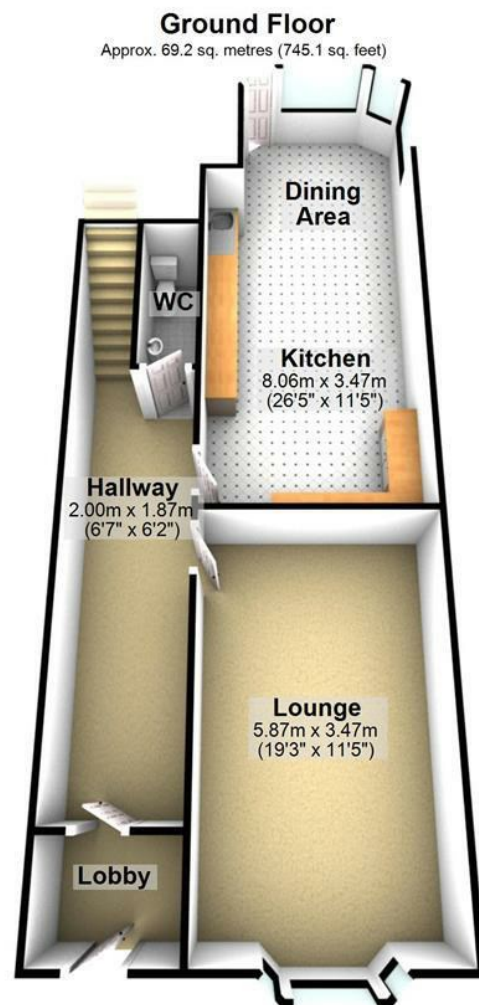




To the first floor is the master bedroom suite, complete with an oversized four-piece luxurious en-suite. Again in the bedroom the bay window overlooks the Gardens and Buxton Opera House. The remaining bedroom to this floor is currently utilised as a dressing area to the master suite. On the second floor are an additional three bedrooms, serviced by the mid-level family bathroom, one of which is currently utilised as an office space.

Externally, there is ample private parking spaces for residents to the rear of the property and visitor permits are available. There is also a paved courtyard to the rear perfect for outdoor entertaining. Cavendish Villas is in walking distance to all of Buxton's most highly regarded amenities, including the recently converted luxury 5 Star Spa Hotel, Buxton Crescent hotel, Buxton Opera House and a range of shops and cafes. Buxton is nestled in the Peak District, an area of outstanding natural beauty with many walks and trails on the doorstep.

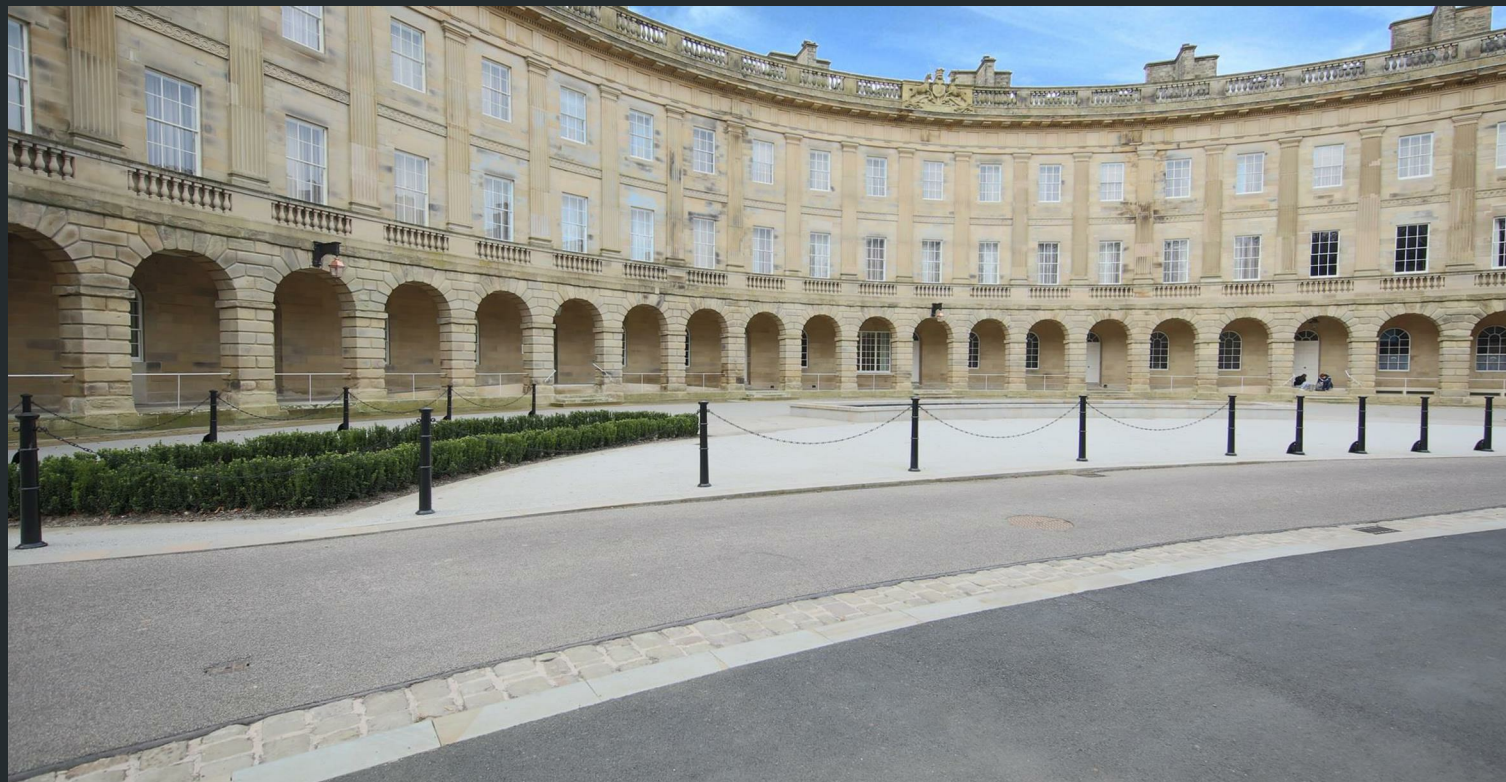




Total area: approx. 174.0 sq. metres (1873.4 sq. feet)

2A Cavendish Villas
Broad Walk
Buxton
SK17 6JE

Asking Price: £575,000
Tenure: Share of Freehold
Local Authority: High Peak Council
EPC Rating: C



IMPORTANT NOTICE: Maison Haus Limited, their solicitors and any joint agents give notice that: 1. They are not authorised to make or give any representations or warranties in relation to the property either here or elsewhere, either on their own behalf or on behalf of their client or otherwise. They assume no responsibility for any statement that may be made in these particulars. These particulars do not form part of any offer or contract and must not be relied upon as statements or representation of fact. 2. Any areas, measurements or distances are approximate. The text, photographs and plans are for guidance only and are not necessarily comprehensive. It should not be assumed that the property has all necessary planning, building regulations or other consents and Maison Haus Limited have not tested any services, equipment or facilities. Purchasers must satisfy themselves by inspection or otherwise.



Mill Lane, Alderley Edge, Cheshire SK9 7TY
moving@maison.haus

01625 919 079